

HR95

1 Pole 10A medium load control relay

Features

- High sensitive 360mW type available
- High surge strength 5,000V
- DIL pitch terminal
- Sealed construction standard

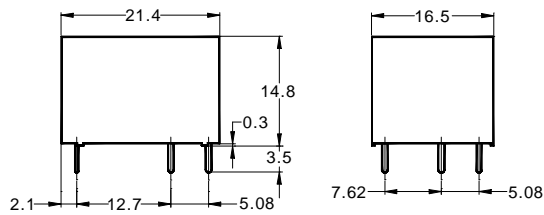


Applications

- Industrial control, Home appliance

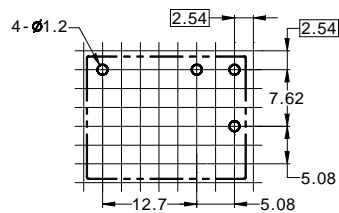
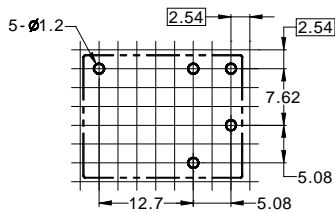
Dimensions (mm)

To convert into inches, multiply by 0.03937



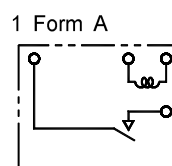
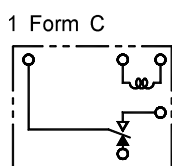
PC Board Layout

Copper-side view



Schematic

Copper-side view



HR95

Contact data

Arrangement	1 Form A (SPST), 1 Form C (SPDT)
Contact material	Ag Alloy
Initial contact resistance	100m Ω max.
Rated load, resistive	10A 28VDC 10A 120VAC
Maximum carry current	10A
Maximum switching capacity	with DC voltage: 300W with AC voltage: 1,200VA
Maximum switching voltage	110VDC 380VAC

Coil data

Nominal voltage	3VDC to 48VDC
Nominal power consumption ¹⁾	360mW, 450mW
Operate voltage ²⁾	75% of nominal voltage
Release voltage ³⁾	10% of nominal voltage

^{1), 2), 3)}The values depend on coil voltage, see Part selection chart

General data

Operate time	7ms max. at nominal voltage
Release time	4ms max. at nominal voltage
Initial insulation resistance	500 M Ω min. (500VDC)
Dielectric strength	Between open contacts: 750VAC _{rms} for 1 minute Between contacts and coil: 2,000VAC _{rms} for 1 minute
Surge strength	Between contacts and coil: 5,000V
Expected life	Mechanical: More than 10,000,000 operations Electrical: More than 100,000 operations at rated load
Vibration resistance	Functional: 10~55Hz dual amplitude : 1.5mm Destructive: 10~55Hz dual amplitude : 1.5mm
Shock resistance	Functional: 10G min. Destructive: 100G min.
Ambient temperature	-25°C to + 70°C (with no icing)
Humidity	35% to 85% RH
Weight	11g approx.

Note: The above figures are initial values

HR95

Part number description



HR95

Contact Form

C: 1 Form C
A: 1 Form A

Coil voltage

DC03: 3VDC DC12: 12VDC
DC05: 5VDC DC18: 18VDC
DC06: 6VDC DC24: 24VDC
DC09: 9VDC DC48: 48VDC(610mW)

Coil sensitivity

None: Standard (0.45W)
H: High sensitive (0.36W)

Part number description is provided for reference, part number can not be arbitrarily composed. Refer to the part numbers shown in the table below. Special designs to customer specifications are possible; please contact HR.

Part selection

Fill in the contact code to the part number by selecting it from the contact rating in part number description

Part number	Nominal voltage (VDC)	Coil resistance ($\Omega \pm 10\%$)	Nominal current (mA)	Must operate voltage (VDC)	Must release voltage (VDC)	Max voltage (VDC)	Nominal power (mW)
Standard coil							
HR95 <input type="checkbox"/> DC03	3	20	150	2.25	0.3	3.9	450
HR95 <input type="checkbox"/> DC05	5	56	90	3.75	0.5	6.5	
HR95 <input type="checkbox"/> DC06	6	80	75	4.50	0.6	7.8	
HR95 <input type="checkbox"/> DC09	9	180	50	6.75	0.9	11.7	
HR95 <input type="checkbox"/> DC12	12	320	37.5	9.00	1.2	15.6	
HR95 <input type="checkbox"/> DC18	18	720	25	13.5	1.8	23.4	
HR95 <input type="checkbox"/> DC24	24	1,280	18.75	18.0	2.4	31.2	
HR95 <input type="checkbox"/> DC48	48	3,780	12.7	36.0	4.8	62.4	610
Sensitive coil							
HR95 <input type="checkbox"/> DC03H	3	25	120	2.25	0.3	3.9	360
HR95 <input type="checkbox"/> DC05H	5	69	72	3.75	0.5	6.5	
HR95 <input type="checkbox"/> DC06H	6	100	60	4.50	0.6	7.8	
HR95 <input type="checkbox"/> DC09H	9	225	40	6.75	0.9	11.7	
HR95 <input type="checkbox"/> DC12H	12	400	30	9.00	1.2	15.6	
HR95 <input type="checkbox"/> DC18H	18	900	20	13.5	1.8	23.4	
HR95 <input type="checkbox"/> DC24H	24	1,600	15	18.0	2.4	31.2	

Note: All values in the chart are measured at 23°C